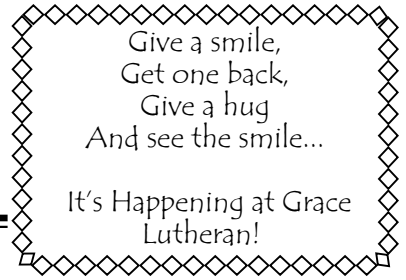


The BEACON

Shines with Grace Lutheran Church News

April, 2013



Give a smile,
Get one back,
Give a hug
And see the smile...

It's Happening at Grace
Lutheran!

From the Pastor's Desk

On Easter Day, we stand gaping at the open and empty tomb. Though we have had centuries to get used to the idea, if we think about it at all, it is dumbfounding. He is risen? Really?

On that first evening, Jesus' followers, understandably more upset than we, found what they thought would be a safe place and hid there. When Jesus appeared among them, he began the process of drawing them away from the graveyard and into the land of the living. The season of Easter does the same for us. We need not linger at the tomb. Because he is risen indeed, we must discern how we shall live.

White Easter paraments set off the beauty of our emerging understanding, like the dormant plants now stirring outside. The fresh colors of spring, buds swelling and then releasing the pent-up leaves and flowers, all shine vividly after the sparse reality of the Lenten season.

Easter is the morning of faith. The air is fresh and new. The sun is not too harsh. If Lent was the night of waiting, Easter is the dawn of hope, not yet tarnished by discouragement or impatience. The texts for the third Sunday of Easter works this theme. We could not see in the night, but in the morning, we can recognize that it is Jesus who feeds us and calls us to feed others.

During the Easter season, the raw fear and confusion of the hours surrounding Jesus' death and resurrection slowly gives way to a growing awareness that we are called out of our comfort zones to claim and proclaim

the power of the resurrection. Faced with this new identity, we need assurances, much like a child who is learning to walk. No longer immobile, or a crawler, a walking child gains a certain independence and is faced with the responsibility and risk inherent in it. The fourth Sunday of Easter reminds us that God is still in charge and will use the power of the resurrection to bring life to others and to us. Dorcas, who had done much good, was raised to life again. We shall not want, the psalmist confesses. Jesus, with a view of the Mount of Olives where he prayed so earnestly before his death, asserts that no one can snatch his sheep from his hand. We are encouraged to venture forth, people of the resurrection. We can boldly claim the bloom that is ours.

Assured of God's steadfastness, we are invited into the visions of what his resurrection faith look like. Peter's dream vision expanded his view of salvation to include Gentiles, an unthinkable option before the resurrection.

In the season of Easter, we are called beyond our fears and confusion and into the light of day. For us at Grace Lutheran Evangelical Church that means we face the ongoing discernment process for a new Called Pastor with hope and trust that the process is allowing God's purposes to flourish. While it may not seem to be up to our speed, God's speed is always directing our efforts and we must be patient and hopeful at the same time. This is difficult, even for Easter Christians. Maybe this is a time to consider how open the congregation is to new visions and purpose in life and ministry.



Inside this Issue	
Get to Know Your Church Council Officers.....	2
Council News.....	2
Graceful Women Agenda for April.....	2
Grocery Gift Cards.....	2
Call Update.....	2
Winter Picnic was a Success.....	2
Building Fund Appeal.....	3
Strangers in Kenya.....	3
Christian Classifieds.....	4
Food Pantry Ministry.....	4
Church Family News.....	8
Musical Notes.....	5
Bishop Election News.....	5
Calendar Postings Procedure.....	5
Welcome Center Furniture Project.....	5
Church Education News.....	6
Easter Bunny Breakfast Pictures.....	7
Birthdays & Anniversaries.....	8
Just for Fun.....	8
Calendar.....	9

CHURCH COUNCIL

Briefs

The Church Congregation Council meets monthly. These are the highlights from their meeting in March:

*The Human Relations committee reviewed four applications for the open administrative assistant position. The applicants were scheduled to be interviewed on March 21, 2013.

*Discussion on the pictorial directory will be revisited at the April council meeting.

GET TO KNOW YOUR COUNCIL OFFICERS

This month we introduce the final person in the slate of new council officers.

Cindy Christenberry, Secretary

Cindy has been elected as the secretary of the congregation council. She chose to serve because she was asked to run for council.

Cindy was baptized in the church and she is the daughter of Jay and Peggy Keener. Her family consists of her husband Joey, two sons and three grandsons.

When asked what she likes to do in her spare time, Cindy quickly replied, "family." She especially loves to spend time with her grandsons.

CALL UPDATE

The Call Committee has received an email from the Synod office, informing us that our second candidate declined to interview, as did the bishop's next choice. The Synod office sent our profile out to our fourth candidate. We pray for God's speed and patience in this process.



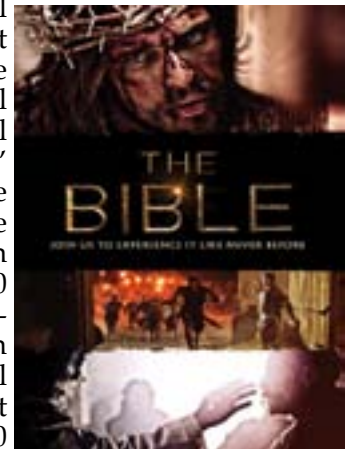
GIFT CARDS HELP THE CHURCH

As is true everywhere, budgets are tight. We are experiencing this in the church as well. There are many people trying to think "outside the box" to fund the church programs. One thing that doesn't cost anything extra is for our parishioners to buy gift cards to their favorite local grocery stores and use them in daily shopping or to give as gifts. The church gets a percentage and the member uses them for grocery shopping with no extra costs. The gift cards come in standard \$50 donations or you can special order any amount. They are available in the treasurer's office any Sunday or you can call Dee at home (244-0083) to custom order your needs. If you are paying by check, please make it payable to 'Grace Lutheran Church.'



THE GRACEFUL WOMEN PROGRAM DETAILS FOR APRIL

The Graceful Ladies will meet Thursday, April 4 at 7:00 p.m. in the Welcome Center. The discussion will be on the History Channel series called, 'The Bible,' which is having encore screenings of the finale episode, 'The Passion' on April 1, from 12:01-2:00 a.m., April 3, from 9:00-11:00 p.m., and April 4 from 1:01-3:01 a.m. The original airings were during Lent on Sundays, from 8:00-10:00 p.m. The series is based on different stories of the Bible and discusses how these stories may relate to our lives today.



The Bible comes to life in the History Channel's epic new series. From Genesis to Revelation, these unforgettable stories unfold through live action and cutting-edge computer-generated imagery, offering new insight into famous scenes and iconic characters. Created by producer Mark Burnett and featuring an international cast that includes Roma Downey, this 10-hour docudrama explores the sacred text's most significant episodes, including Noah's journey in the arc the Exodus and the life of Jesus.

THE WINTER PICNIC WAS A HUGE SUCCESS!

Were you one of the more than 75 people who came to our winter picnic? If you were not able to make it, you missed a great time. There was lots of singing, dancing, games, and of course EATING! The picnic was so successful that we are thinking more picnics may be a good way to encourage fun and fellowship. Stay tuned for upcoming chances to socialize with our church family.





THE BUILDING FUND NEEDS YOU

Yellow building fund envelopes can be picked up in the Treasurer's office. Why should you consider an additional donation to the building fund? Our endowment that maintains the physical building and its contents is shrinking. It is a priority that we need to grow before our funds run out. We have \$74,292 in our account and while that seems like a lot, it goes to maintain the expensive things like the steeple, roof, and instruments, and the money often goes out in big chunks. If you are blessed with some leeway in your budget, consider a donation to the building fund. You can rest assured that the money you donate will have very visible results you can see and be proud of. Previous generations of our membership have given us this endowment. Our generation needs to continue the legacy.

STRANGERS IN KENYA

Hi, friends!

We're approaching the end of the second term of the Rift Valley Academy (RVA) school year. We have three big prayer requests for all of you to consider.

1. Kenya's elections- The much-anticipated elections took place yesterday. After the violence of 2007-08, Kenya is much better prepared this time. Nevertheless, we covet your prayers as the country walks down this road. See below for our sending agency's update from today. Pray for peace and justice.

2. Grief- On top of the normal busyness of RVA life, we've dealt with two emotional losses this term. Ryan's last living grandparent died a few weeks ago. At the same time, friends of ours from San Diego who are also serving with Africa Inland Mission (AIM) in Lesotho, South Africa went through a traumatic period. Chris – husband of Michelle and father of six kids – fell ill with encephalitis and eventually succumbed to it. His second daughter is a student at RVA, so this trauma and loss has affected many of our 300+ high school students. Pray for healing and comfort.

3. On a more business side of things, Heather's department is in the middle of major changes. As the department head, she's dealing with curriculum and debate for hours and hours a week. Pray for wisdom, patience and strength for her.

Thanks for standing behind us. We are blessed to be a blessing.

Ryan, for the Murphys

Ways to Stay in Touch

*Skype – [africamurphy](http://africamurphy.com) (free calls!)

*Blog – strangersinkenya.blogspot.com

*Book – “Like” our Facebook page at facebook.com/africamurphy

*Facebook – search Ryan-Heather Murphy and add us as a “friend.” Check out our page for recent family photos.

*NEW phone numbers – Ryan: 011-254-732-891349 / Heather: 011-254-732-856857

*Africa Inland Mission address for financial support:
P.O. Box 3611

Peachtree City, GA 30269-7611

Checks should be made payable to Africa Inland Mission

*Field Address:

Rift Valley Academy

Box 80

Kijabe, 00220

Kenya, East Africa

AIM Kenya Election Update

The election in Kenya has been completed. However, the tallying of results is moving slowly ahead with about 40% of the returns accounted for as of noon (local time) on Tuesday, March 5. Unfortunately, there is no analysis available to say which of the various voter strongholds have reported in, so projecting a winner is speculative at best. Uhuru Kenyatta is leading at 2.2 million versus Raila Odinga's 1.75 million votes as of 11 am, local time. The six other contenders are all considered a very distant “last place.”

There were some significant violent outbreaks in three locations along the coastal areas of Kenya late Sunday and early Monday, but things have been peaceful since that time. The attacks were directed at police and are being attributed to a separatist group. This is not the widely feared type of violence that might have thrown Kenya back to the violence of 2007-08. We are in touch with many different members of Kenyan society who are reporting that there is some frustration with the slowness of the tallying, but the electoral commission is still being seen as competent and accountable. The electoral process is still well ahead of the game in comparison to 2007-08.

It is difficult to say when to expect sufficient returns so that a winner can be projected – or how the opposition might respond. The electoral commission has stated that it will send out comprehensive results by the evening of March 6.

All of our members are staying in again today (March 5), and there have not been any incidents affecting our membership. We continue to closely read election developments.

DRIED ARRANGEMENT BENEFIT FOR THE FOOD PANTRY



Formerly called the Pussy Willow Benefit, the Dried Arrangement Benefit is an expanded version that covers much more than just pussy willows. This year, Michael Farrell will have dried arrangement materials and live plant samples available in the Welcome Center before and after all services. Orders can be placed on Sunday, April 14, and materials will be available for pickup on Sunday, April 21 under the canopy outside. All donations will go to the Food Pantry. The variety of cut pussy willows will include straight, crooked and black, of many different lengths. Also included in the benefit will be seed pods, ornamental grass spikes, Corkscrew Willow canes, cones of many sizes and shapes, some dried snow ball flowers, and a limited variety of live plants. No values will be placed on the materials; an appropriate donation to the Food Pantry will be up to the buyer. Checks should be made payable to Grace Lutheran Church, with 'Food Pantry' in the memo space. Thank you for your support of the Food Pantry, which serves many in the Red Lion community.

CHRISTIAN CLASSIFIEDS



Hospice and Community Care's Pathways Center for Grief and Loss is looking for volunteers to serve as adult companions to accompany grieving children and teens at their camping programs. Camp Mend A Heart is a one-day camp for children and teens ages 6 to 18 who are coping with a loss.

Camp Chimaqua, is an overnight weekend camp, for grieving children ages 6 to 12. Camp Mend A Heart will be held Saturday, June 1, and Camp Chimaqua will held from Friday, June 7, through Sunday, June 9. Both camps will be held in York County.

The focus of each camp is to help children learn about loss while still having fun. Throughout camp, each child is paired with a specially trained adult buddy for supervision, support, and companionship.

Adults interested in volunteering may call Sonya Hershey-Velasco at 391-2413 for more information and to request a volunteer application. To learn more about the camp opportunities, readers may visit www.pathwaysthroughgrief.org.

DO YOU HAVE A CLASSIFIED AD YOU WOULD LIKE TO RUN? IT IS FREE TO ALL. IF YOU NEED SOMETHING OR A SERVICE OR YOU WOULD LIKE TO GIVE SOMETHING OR VOLUNTEER YOUR TALENTS, ADVERTISE!



HAPPENINGS IN OUR CHURCH FAMILY

April Einsig, daughter of Mark and Heidi Einsig, was also inducted in the National Honor Society at Red Lion High School in February. Her induction in

the society means that she has demonstrated excellence in the areas of scholarship, leadership, service, and character. These characteristics have been associated with membership in the organization since their beginnings in 1921 and 1929. Congratulations April!

The deadline for early registration discounts for the summer Lutheran Camping is early April. If you have questions, please call Karen Turner at 244-7002.

The Lutheran Camping Corporation of Central Pennsylvania operates three facilities within the Lower Susquehanna Synod of the Evangelical Lutheran Church in America. These facilities are Kirchenwald, Nawakwa, and The Wittel Farm. They offer a wide variety of outdoor experiences in a uniquely Lutheran tradition.

Summer camping programs for young people are offered at Nawakwa and Kirchenwald. Programs such as sports camps, outdoor wilderness camps, canoe camps, bike camps, and the traditional small group resident camp programs offer a wide variety of exciting programs for young people. There are also retreat programs for all ages throughout the year.



MUSICAL NOTES

"When in our music God is glorified..."



You had
the seed...

Blessings,
Jeffrey

WELCOME CENTER FURNITURE PROJECT

Have you thought about the welcome center furniture refurbish project? Wouldn't it be nice to contribute to beautifying the worn fabrics? This furniture gets used A LOT! We need \$1450 for the sofa and \$625 for each chair. Perhaps you, your service group, a family or your friends can do a fundraiser to help repair the welcome center. Get creative. Maybe you would like to memorialize or honor a loved one by contributing to this project. If this is something that any group or individual would like to support, please place a specially marked envelope with the label, 'welcome center furniture fund,' in the offering plate or stop by the treasurer's office. If you have any questions regarding this project, see Keith McCleary or Janet Murphy.



ELECTION OF A BISHOP FOR THE LOWER SUSQUEHANNA SYNOD

At its 2011 annual assembly, the Lower Susquehanna Synod adopted a "Preliminary Identification Process of Potential Nominees Leading to the Election of a Bishop." In part it requires that voting members of each conference consider the gifts desirable and necessary in a bishop at a conference assembly prior to the election of a Bishop. The South York Conference met here at Grace on January 27, 2013 to consider this question. The following attributes for a Bishop were chosen: That they be a visionary, a person of insight and one with the courage to address new issues while maintaining a sense of who we are as Lutherans. They chose that this be a person with the strong capacity to transform the office, to involve more of the conferences in the work of the church, and to connect congregations to the work of the ELCA. They also chose that a new Bishop have a capacity to help the congregations of the Synod to step beyond our four walls to serve Christ. Lastly, they chose that the bishop should be a person with the capacity to lead, motivate and speak publically.

CALENDAR POSTINGS PROCEDURE

As reported last month, we have a new calendar system to get the word out about events and activities going on in the church. The calendar is available online and on the bulletin board by the elevators near the parking lot entrance.

Would you like to post an event? To ensure accuracy, we have a system to post activities. There is a mailbox labeled 'meeting request' with blank sheets. If you have an event to be posted, just fill out a form and place it in the office mailbox. This will enable us to keep one master calendar for all uses of the church and will automatically be included on our web page calendar at our website. Anyone who is planning an event in the church can request it to be posted and boost your attendance.

Each Conference of the Synod has been asked to consider the attributes it desires to see in a new Bishop and then meet a second time to propose up to three names of ELCA pastors for consideration at the Synod Assembly. These are not "nominations" but recommendations for later nomination at Synod Assembly. On Thursday, June 6, 2013 at the Synod Assembly, a first ballot for Bishop will occur as a nominating ballot. Any potential candidate for Bishop must be nominated then. A second ballot will then occur after which the seven highest voted in this ballot become official Candidates for Bishop. A voting process then narrows this field until a Bishop is elected. On March 17, 2013 the South York Conference met at Hametown to consider recommendations. The Conference chose to recommend for consideration: Pastor William Cluley, Pastor Ed Robbins from Glen Rock, and Pastor Stephen Herr, from Gettysburg. Biographical information on all those recommended from all Conferences is to be provided on the Synod web site on April 22, 2013.



Grace Lutheran's Education Page

FAMILY SUMMER SUNDAY SCHOOL ...GOES HOLLYWOOD!

On Sunday, July 7, we will begin our fourth year of Family Sunday School. As you know, this is a program designed for children and their parents to work together in a fun and spiritual way, to learn more about the Bible, and to interact with other families of Grace Lutheran Church. Our first session will involve making costumes and props for the rest of the summer sessions. Then, on July 14 the real excitement will begin. Families will meet in the social room for a brief lesson about our production, assemble their costumes and props and then move to the church lawn to present their "show!" Parents and others are invited to bring their lawn chairs so that they can sit and enjoy the entertainment.

HELPERS NEEDED FOR CHILDREN'S CHURCH!

Volunteers are needed to teach Children's Church during the sermon of the contemporary service (Spirit Cellar). Lesson plans and supplies are provided. No special qualifications or additional time commitment is required. If you love children and are willing to lead or help with the lesson and activity, this would be a fitting way to donate your time and have some fun with the children of the church.

Ideally, we'd like to have several volunteers on a rotation, so that no one person is missing church all the time. Look for the sign-up sheet on the Spirit Cellar announcement board by the kitchen window. You can also seek out Kendra Shaffer for more details.



Below is a schedule of our productions:

- July 14: Battle of Jericho
- July 21: Jonah and the Whale
- July 28: Noah and the Ark
- Aug 4: Moses and the Red Sea
- Aug 11: Wandering of the Israelites
- Aug 18: Feeding of the Five Thousand
- Aug 25: David and Goliath
- Sept 1: The Nativity

We hope that you will mark your calendars now and plan to attend these remarkable sessions of Family Sunday School here at Grace.

VBS IS IN THE PLANNING STAGES...WE NEED YOU!

Maigan Gideon, is working hard to rally the troops. She is in urgent need for teen or adult volunteers to make it all happen. Vacation Bible School (VBS) will be the week of July 15 – 19 from 6:30 – 8:30 p.m. each night. Volunteers are necessary to make the magic happen for the kids. There are lots of fun tasks for all types of talents. We need teenagers or adults to assist with games, snack time, Bible stories and crafts. We also need group assistants for the different ages: 3 and 4 year olds, kindergarten -1st grade, 2nd - 3rd grade, 4th - 6th grade, and 7th - 8th grade.

There is no experience necessary and the entire curriculum comes already prepared. If there are not enough adults or teens to help out, VBS may be in jeopardy. Volunteering is easy. You can pick up volunteer sign-up sheets on the information table during Spirit Cellar. Completed forms can be placed in the VBS mailbox outside the office. We also have added a VBS webpage complete with an online sign up on the church website: gracelutheran.com. Click the tab, 'kids & youth,' then click the VBS page. You can fill out an online sheet or print it out as a PDF. Our theme for this year is a medieval theme called 'Kingdom Chronicles.' Please contact Maigan Gideon with any questions at 717-817-4133 or email: mouthymaigan@comcast.net.



HIGHLIGHTS FROM THE EASTER BUNNY BREAKFAST



April Celebrations



Loretta Golden	4/01
Karen Turner	4/04
Connie Heiss	4/05
Shaelyn Rae Peters	4/05
Janet Murphy	4/06
Mark Ricci	4/06
Eric Smith	4/06
Diana Smith	4/06
Kristi Rexroth	4/07
T. Scott Frey	4/10
Andrew Warntz	4/10
Alysin Lee	
Dellinger-Herman	4/12
Daphne Grim	4/12
Allen Dellinger	4/14
Chris Golden	4/14
Vincent Kicas	4/14
Kelly Stauffer	4/14
Hayden Christenberry	4/15
Robert Strobeck	4/15
Jane Shank	4/16
Thomas Smith	4/16
Kay Mansberger	4/18
Hayes Webster	4/21
Parker Bowles	4/22
Darwin Howard	4/22
Kurt Golden	4/24
Teresa Goodling	4/24
Shelley Fishel	4/25
Debbie Hoover	4/25
Brian Kollosch	4/25
Larry Fales	4/26

Wedding Anniversaries



David & Linda Dennish	4/01
Roy & Colleen T. Grove	4/15
Ralph & Julie Urey	4/22
Kevin & Daphne Grim	4/25
George & Kristine Eveler	4/30

ATTENTION GRADUATES OF 2013

We are celebrating all graduates with a display in the main hallway showcase. If you are graduating, please get your pictures to Ellen Warntz by May 5.



ANOTHER USE FOR THE BIBLE

A woman had just returned to her home from an evening of church services, when she was startled by an intruder. She caught the man in the act of robbing her home of its valuables and yelled, "Stop! Acts 2:38!" (Repent and be baptized, in the name of Jesus Christ, so that your sins may be forgiven.)

The burglar stopped in his tracks. The woman calmly called the police and explained what she had done. They arrived very quickly and as an officer cuffed the man to take him in, he asked the burglar, "Why did you just stand there? All the old lady did was yell a scripture to you."

"Scripture?!" replied the burglar, "She said she had an ax and two 38s!"

Knowing scripture can save your life - in more ways than one!

HOW TO SUBMIT TO THE NEWSLETTER

We welcome all submissions to the newsletter. The newsletter is a great place to ask for help, publicize an event you are planning in the church, tell people about something you or your family is doing, thank members, celebrate a victory. The possibilities are endless! The vision for the newsletter is to communicate between members in a clear and interesting format. If you would like to submit to the newsletter or help in any way, here is what you can do:

*If you are comfortable with computers, you may email Jennifer Rudolf at: swimmerjenusa@yahoo.com. If you are including digital artwork, make sure it is at least 300KB in size.

*If you prefer paper, just drop off your submission in the mailbox marked 'newsletter' outside the office door. The mailboxes are located on a table across the hall.

Please keep in mind that the deadline for submission is the 20th of each month for the following month's newsletter. If you have pictures or graphics that complement your submission, include them along with directions or suggestions on their use. Please include your contact information in every submission.

April 2013

SUN	MON	TUES	WED	THUR	FRI	SAT
1		2 7:00 pm - : Music/Worship	3 6:30 pm - 7:15 pm: Ringers by Grace 6:30 pm - 7:15 pm: Spirit Cellar Practice 7:30 pm - 9:00 pm: Grace Sings – Adult Choir	4 6:30 pm - 7:45 pm: Girl Scouts 7:00 pm - : Graceful Women	5	6
7 9:00 am - 9:45 am: Contemporary Service 9:45 am - 10:45 am: Sunday School 10:45 am - 11:45 am: Traditional Service	8	9	10 6:30 pm - 7:15 pm: Ringers by Grace 6:30 pm - 7:15 pm: Spirit Cellar Practice 7:00 pm - : Finance 7:30 pm - 9:00 pm: Grace Sings – Adult Choir	11 6:30 pm - 7:45 pm: Girl Scouts 6:30 pm - : Church Council Meeting	12	13
14 9:00 am - 9:45 am: Contemporary Service 9:45 am - 10:45 am: Sunday School 10:45 am - 11:45 am: Traditional Service	15	16	17 6:30 pm - 7:15 pm: Ringers by Grace 6:30 pm - 7:15 pm: Spirit Cellar Practice 7:30 pm - 9:00 pm: Grace Sings – Adult Choir	18 6:30 pm - 7:45 pm: Girl Scouts	19	20
21 9:00 am - 9:45 am: Contemporary Service 9:45 am - 10:45 am: Sunday School 10:45 am - 11:45 am: Traditional Service	22	23	24 6:30 pm - 7:15 pm: Ringers by Grace 6:30 pm - 7:15 pm: Spirit Cellar Practice 7:30 pm - 9:00 pm: Grace Sings – Adult Choir	25 6:30 pm - 7:45 pm: Girl Scouts	26	27
28 9:00 am - 9:45 am: Contemporary Service 9:45 am - 10:45 am: Sunday School 10:45 am - 11:45 am: Traditional Service	29	30				